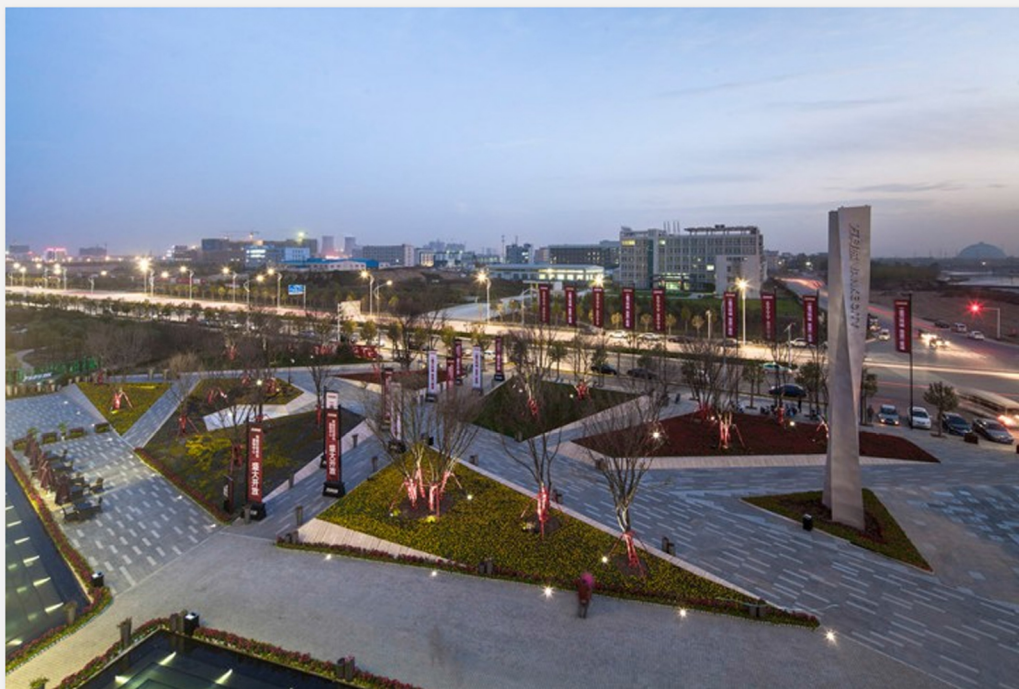


TYPOLOGIES

PARKS	PLAYGROUNDS
SQUARES	POST-INDUSTRIAL
WATERFRONTS	CEMETERIES
GARDENS	INSTALLATIONS
ATRIUMS	RESIDENTIAL PARKS
BRIDGES	RESTORATIONS
ART	COR-TEN
WATER FEATURES	STREETS

Select Studio



PROJECT



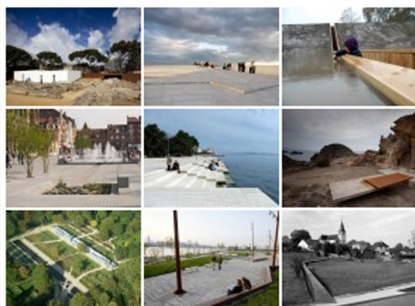
Zhengzhou Vanke City Gallery by Locus Associates

DECEMBER 16, 2013 / FILED UNDER: ATRIUMS / CHINA / PARKS / SQUARES / WATER FEATURES / SEE ALL PROJECTS BY:
LOCUS ASSOCIATES / 2,393 VIEWS /

Like 42 Share 183 Tweet 7 +1 0 Pinterest 8

Project: Zhengzhou Vanke City Gallery
Location: Zhengzhou, China
Client: China Vanke
Landscape Architecture: [Locus Associates](#)
Design Lead: Brandon Huang
Design Team: Kenny Fung, Ray Wan
Design & Completion: 2013
Site Area: 18,000 sqm
Photography: Béton Brut

SELECTED PROJECTS



SEE ALL SELECTED PROJECTS



Nordic Centre Planica
by AKKA



© Béton Brut



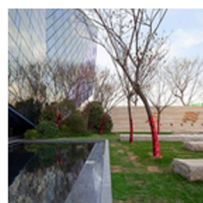
© Béton Brut



© Béton Brut



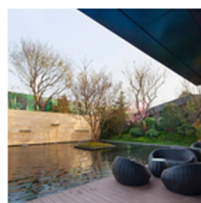
© Béton Brut



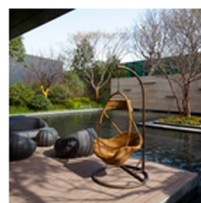
© Béton Brut



© Béton Brut



© Béton Brut



© Béton Brut

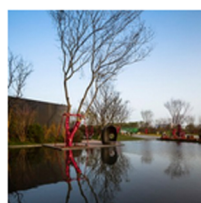
MOST VIEWED PROJECTS



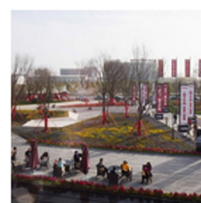
© Béton Brut



© Béton Brut



© Béton Brut



© Béton Brut



© Béton Brut



© Béton Brut



© Locus Associates

Located in the Advanced Technology Industries Development Zone of Zhengzhou, Vanke City is one of the biggest new town developments in China. Spanning more than 100 hectares, Zhengzhou Vanke City will provide homes for more than 30,000 households in the coming decade. The Sales Gallery is to showcase a new urban environ to the future residents, meeting the ever increasing demand for residential developments in the area.

Set to become the benchmark for the entire regional precinct, the main objective for the landscape environment is to create a distinctive identity for the arrival plaza in a post-industrial context where topography is generally flat, marking the germination of an entire new town.

The interweaving paths of the front plaza encapsulate the large flow of pedestrian traffic. Along with a series of elevated landforms, the landscape seeks to echo the multi-faceted crystalline architectural facade. This constructed topography starts to augment the flat site into an ever-changing landscape experience for visitors. Integrated with dry fountains and children's play zones, the urban square is soon becoming the a popular meeting place, creating its own context and identity in an area of overriding tabula rasa.

A 1, 500-square-metre reflecting pool separates the front plaza and rear garden. Subtle pool fountains provide vivid reflections to the architecture and landscape environment. Slated to transform into a Community Centre in the future, the building will fulfill public amenities for residents including the kids and elderly.

In contrast to the large-scale urban square, the show unit areas aim to provide a conducive environment for leisure and recreation with a series of smaller scaled spaces. These gardens include a Zen Garden, Albizzia Boulevard, Water Courtyard, Maple Terrace, Sunken Deck and Sunny Poolside. These landscape environments integrate to form a cohesive whole with the arrival experience.

